

**NB: WEB ONLINE LINKS
THROUGHOUT THIS PDF**



"By Christ For Christ!"

www.askjohnmackay.com

His Blessings are "new every morning, great is thy faithfulness." Lam 3:23

Backyard Bible Birdsong With Diane Eager

I regularly take part in our YouTube program Creation Conversations with our UK colleague Joseph Hubbard. Because of the time zone difference between the UK and Australia, this UK Friday night program takes place early Saturday in Australia. One lovely morning our local birds were very active with lots of singing and calling. It was such a pleasant morning I had my windows open, but unknown to me my computer microphone was also broadcasting beautiful Aussie bird sounds. I didn't notice until one viewer commented on my glorious background chorus. Birdsong is especially cheering in the morning. Many Australian parrots may be rather raucous, but others such as the honeyeaters and magpies are brilliant at morning melody.

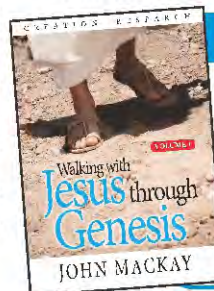


Scientists are still speculating about the evolutionary function of the "dawn chorus" of melodic birdsong that greets each new day across the globe. They should scrap evolution as the reason, and consider one of the functions of morning birdsong is to praise the Lord for life, for the new day, and help us do the same. Last year scientists estimated there were about 50 billion birds living the earth. So, why not join them and start your day with praise to our Creator and Saviour. 50 billion birds can't be wrong! And neither was the psalmist when he wrote "Praise the Lord! For it is good to sing praises to our God; for it is pleasant, and a song of praise is fitting". Psalm 147:1

Thanks to all who have been praying for Anne Mackay. Christmas night Anne had severe tummy pains. We quickly figured it was not heart as her breathing and pulse were normal, and symptoms calmed down within the hour. Re-emergence of this pain at an the ultra-serious level a week or so later put Anne in Redlands Hospital where she was on antibiotics for gall bladder infection over four days then dismissed. A further more serious attack during the second week of February saw her rushed to hospital for an emergency operation which the surgeon said revealed her gallbladder had become gangrenous. We are very grateful to the over stretched staff at Redlands and the 'miraculous immediate availability' of the operating theatre. Thank you Lord for hearing your servant's prayers.



Anne is still in recovery mode, so please pray for her, and particularly for the hereditary issue that troubled both her parents as they aged - short term memory loss. We shared Anne's short term memory loss with our local church last year and it continues to plague Anne much to her discouragement. Pray much for Anne and husband John, and the whole ministry Team.



"Walking with Jesus through Genesis",

has a great video intro FREE by downloading our Dreemar app. We've had incredible response to this Bible study, as we take people from Genesis 1 through the first days of Creation, with Christ at its centre. Available: www.creationresearch.net/shop.

ENJOY EASTER IN THE BUSH - BE BLESSED BY GREAT BIBLE TEACHING FROM JOHN MACKAY - CAMP IT, VAN IT OR DAILY VISIT.

Share Fellowship Fun And Food With The Saints

EASTER 2022 ...Friday 15th April to Monday 18th.

- Friday Sessions 4 and 7pm
- Saturday Sessions 9 and 11am, optional field trip 1pm-5pm, EVENING BBQ-SING SONG 6pm
- Sunday Church 9, and sessions 11am and 7pm
- Monday Sessions 9 and 11am

LOCATION 40 minutes west of Bendigo Victoria
Mt Hope, Keoghs Lane, Llanelly 3551.

Just North off Wimmera Highway B2403k NW of Tarnagulla (nearest town).

ENTRY BY DONATION

WHAT TO BRING - CONTACT ANTHONY BELOW

FIELD TRIPPERS

Round trip 40 -50 mins each way Bring hammers and chisels collecting bag, water and nibbles, appropriate clothes etc?

MUST REGISTER with Anthony Pearse pearses72usa@gmail.com or phone 0418 225 005

When the 2022 Aussie flood waters are rising and your first thought is Jurassic Ark was destroyed in 2011 by water and we spent 100K in repairs, now what's gonna happen? On top of 2 years of Covid closures, volunteers losing jobs over mandates, how much more can we take? I'm glad God's Word reminds us that *'The fear of the Lord is the beginning of wisdom'* and if we *'Acknowledge Him in all our ways, He will direct our paths'*. (Psalm 111:10, Proverbs 3:6).

Our constant prayer has been "Lord grant us Your wisdom." So when we rebuilt Jurassic Ark last year, we took into account the highest level 2011 floodwaters plus added 1/2m and built new levee banks to that height. As a result the Jurassic Ark fossil site is absolutely dry. We may not have anybody able to get there just yet as the river is still flooded and the main bridge smashed, the entry to Jurassic Ark is underwater and we have been cut off in all directions, but unlike 2011 there is no flood damage to Jurassic Ark at all. Thank you Jesus for the wisdom that comes from you. Thankyou, thankyou Jesus..



Remember during last year's drought we took the opportunity to double the size of our Jurassic Ark dam. Now it holds some 7 or 8 times its original volume. Shown at the bottom is the maximum flood level 2022 (bottom left) and our bone-dry fossil site (below right). Keep praying for the research and visitors at Jurassic Ark. Thank you Jesus for wisdom and for those whose giving has made these things possible.



USE PAY PAL TO SUPPORT CREATION RESEARCH
via accounts@creationresearch.net.
or WEB GIVE via www.creationresearch.net click **DONATIONS** ALSO
TO ADDRESSES ON BACK PAGE



MATT CORAL

SCALLOP



BRACHIOPOD

CREATION DISCOVERY CENTRE

Inspection Head Wharf, Beauty Point, Tasmania.
Adults \$7, Child \$4, Family (2 adults + children) \$20
(children under 4 – free).
Excellent displays Bible History, Archaeology, Flood,
Fossil and video.

Fossil Fever has hit a small band of dedicated Creation Discovery Centre (Tasmania) volunteers who are aiming to develop a picture of the impact of Noah's flood across our southern Australian island, that will help build on decades of work by Creation Research across Australia and the world.

In January 2022, Carl and Reuben Mineur, Derek Wells, Robert, Daniel and Aaron Zanus and Craig and Damon Hawkins (above) trekked into the mountainous Tasmanian wilderness to investigate fossil deposits at the head of the Mersey River. Some great finds were made of various marine creatures (pictures left) including a magnificent scallop (pecten), brachiopods and gastropods (snails). The band of sedimentary rock we scoured at 700m (2100ft) elevation, contained an estimated 10's of millions of fossil sea creatures from all different depth marine environments, all mixed up in the rock and demonstrating the turbulence of the flood event. The fracturing of this band and the towering volcanic basalt mountains standing above them speak of different stages of the great flood, as volcanic rock from deep in the earth both lifted the land then burst through the sediments forming the towering basalt peaks that dominate the Tasmanian landscape today. The same escape of 'underground materials' that caused the land to uplift resulted in the dropping of nearby ocean basins allowing the massive erosive draining of the waters resulting in our rugged Tasmanian upland topographies.

Our plan for the Tasmanian Discovery Centre is to build a detailed picture of the many sites across Tasmania that contain similar chaotic marine fossil beds to demonstrate how widespread and catastrophic the flood truly was.

Such fossils help build a picture supporting Biblical world history so we were most encouraged when a visiting University technician told volunteers our Creation Discovery Centre had "changed my life". That's why we are doing it!

Craig Hawkins 6th March 2022

SEE MORE OF TASMANIA'S GREAT FOSSILS IN DARWIN ON THE ROCKS

AVAILABLE BY STREAMING, MP4 and DVD
WEB ORDER: www.creationresearch.net click SHOP

PHONE ORDER: 07 3206 4467
DOWNLOAD OUR ENTIRE MP4's AND MP3's



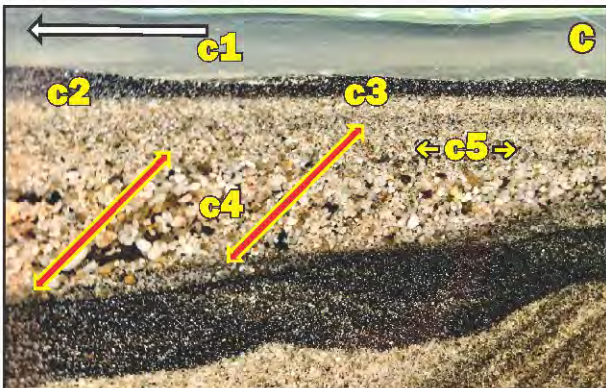


The Lord has blessed our Strata experiments with some fantastic results which have added a whole new dimension to the role layered (or laminated) water plays in how sedimentary layers actually form in a flood current. Picture A (left) is a rear view of our machine which has water and sediment flowing in the direction of white arrow.

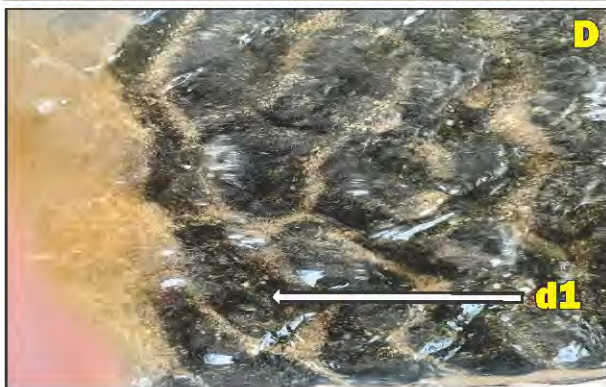
Picture B (right) shows a phenomenon we occasionally observe with turbulent water flowing across a surface. Flow direction shown with white arrow **b1**. We do not yet know why some water flow commences this turbulent pattern.



b2 also shows the existence of 'cross bedding' laminae at 30-45 degrees to the horizontal from sediment laid down at the front of an advancing flow.

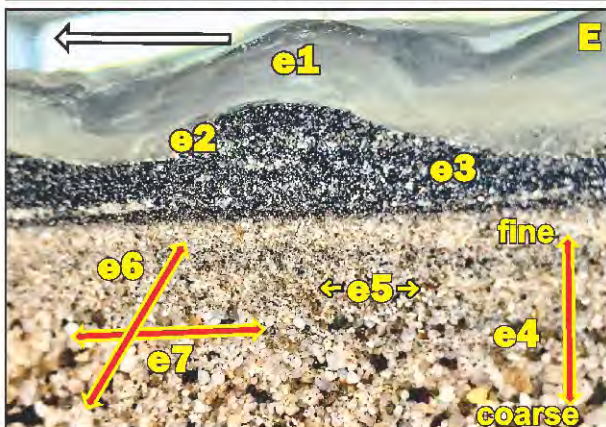


Picture C (left) shows clay-colored water rushing smoothly over the top of the dark layer, yet showing layers or laminae (**c1**) in the water when it is moving. C also shows water's ability to form small irregular dunes across a flat surface (**c2,3**). Notice also the angled layers **c4**, outlined by large and small dark particles, (red and yellow arrows) which were deposited at roughly 50-60 degrees to the horizon. **c5** shows horizontal layers forming, within which the particles grade from largest at the bottom to finest at the top.



D is an aerial view of turbulent flow showing dune formation is semi-regular with flow direction shown by white arrow (**d1**).

E shows another phenomena we have observed in turbulent flow (**e1**) – its ability to form dunes as well as flat beds. Dunes occur in 'lumps' (**e2**), yet within the dune, lamination is horizontal (**e3**). As the sediment layer deposits inclined beds (normally labeled cross bedding (**e6**) At the same time dark and light horizontal beds form (**e5**) in the graded bedding (**e4**) i.e. the different bed types cross one another (angled and horizontal). We have labeled this phenomenon CHIASTIC FLOW (**e7**), from 'chiasitic' meaning to 'cross over'.



SUMMARY As water flows, layers (or laminae) form horizontally as the beds advance in the direction of flow. Within these beds 'cross-beds' simultaneously form at 50-60 degrees to the horizontal edges of the advancing bed. Within the bed, particles grade upward in size from largest at the bottom to finest at the top*, while the advancing front also forms horizontal bedding within the main bed. These separate directional beds (the horizontal and the inclined) are simultaneously deposited at angles to one another and form another example of the phenomena we have labeled CHIASTIC FLOW.

*Note graded bedding seems more size determined than density related, as dark particles are heavy mineral sand (density 4-5), while lighter particles are quartz (density 2.7)

We have put additional photographic reports of CHIASTIC FLOW on our web showing circumstances when multiple layers are forming across each other at different angles within the one flow of water at the same time. See [www.creationresearch.net experiments 10](http://www.creationresearch.net/experiments_10) and [11](http://www.creationresearch.net/experiments_11). The vital importance of this research in defeating false beliefs that rocks and fossils formed millions of years ago, can not be understated. We need your financial support now.

USE PAY PAL TO SUPPORT CREATION RESEARCH
via accounts@creationresearch.net.

or WEB GIVE via www.creationresearch.net click **DONATIONS** ALSO
TO ADDRESSES ON BACK PAGE



New Treasurer
Marvin Jones
Pray for him



Joe Hubbard



Logo comments?
info@creationresearch.net



Joseph,

John,

Sam

SAM, a member of our UK team has suggested it's time for a new logo. What do you think?



The Diane and Joe Show

Every few weeks we send out Creation Research e-News containing brief ministry updates along with stories from science news. Diane researches and writes the science news stories and provides editorial comments on how to understand scientific discoveries from a Biblical perspective. This is an important ministry for students and the general public who are being constantly brainwashed that all scientific discoveries are evidence for evolution.

This year we are expanding this aspect of our ministry with the new Creation Research Evidence Video. After an email newsletter is sent out Joseph Hubbard and Diane Eager record discussion of the topics covered in the newsletter and provide further background information and illustrations. It's a great way to learn more about each topic or introduce your friends to our ministry. Videos available on creationresearch.net YouTube channel and are free to view.

EXCITING UK SEPTEMBER DIG OPPORTUNITY

Creation Research will host an amazing fossil week long camping retreat to the Jurassic Coast! Join Indiana Joe for 6 days of field trips, workshops and seminars, down on the Dorset coast, right next to amazing fossil locations like Charmouth, Lyme Regis, Portland and Seatown. A unique opportunity to get up close and personal with fossils, geology and nature, along with daily workshops, Bible Devotions, and background sessions. The retreat will also feature a number of speakers for special evening seminars, and attendees will get a whole host of additional resources, making this the Creation Research event of the year!

Monday 26th September - Sat 1st October. Price: £100 base booking + £75 per person (Age 6 and under free). EARLY BIRD DISCOUNT - Save 20% per person before 1st May 2022! Full details and booking available NOW!
www.creationresearchuk.com

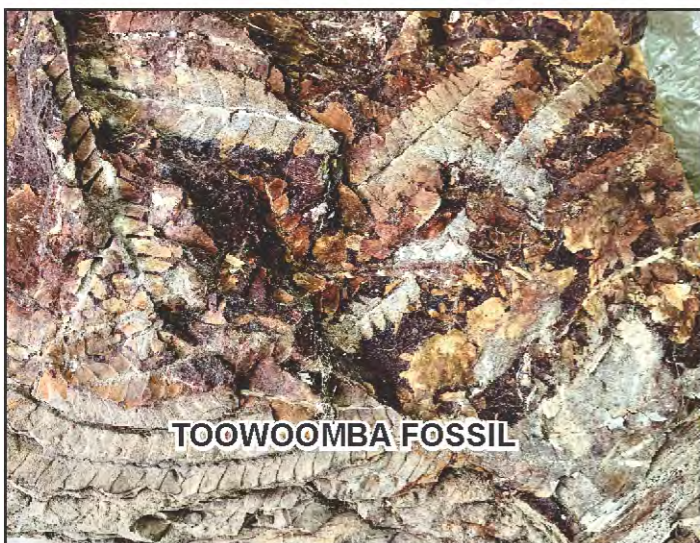


FAREWELL LINDA



3D FERN

Taken out by Covid mandates is the only way you can describe what's happened to our office worker Linda (above left) and her husband Marius, as the Company he worked for demanded the vaccination mandate be met, and along with many thousands of Queenslanders he refused. That meant they needed to leave their Redlands residence and shift to a more affordable area north of Jurassic Ark, which sadly meant Creation Research losing Linda. We thank them both for their wonderful involvement and look forward to keeping in touch with the Ministry and ask you to pray for God's richest blessing and provision upon them and for the ending of these evil mandates. Linda's South American fish (top left) was found in a concretion preserved in 3D with intestines intact. The 3D fern preserved in silica is from the Ipswich area.



TOOWOOMBA FOSSIL



WELCOME KAREN

A big thank you to Karen (above right) for stepping up to do Linda's work with our Fossils. Karen now supervises the cataloguing and filing of our tens of thousands of MUSEUM quality specimens. She is actually holding a lovely specimen of the fern Jurassic Rhacopteris from outside Toowoomba.

SUPPORT OUR GREAT FOSSIL MUSEUMS

Queensland, Tasmania, England,
Canada & USA

Real evidence that the real Creator, Christ did
what He says and says what He will do.

USE PAY PAL TO SUPPORT
CREATION RESEARCH
via accounts@creationresearch.net.
or WEB GIVE via
www.creationresearch.net click
DONATIONS ALSO
TO ADDRESSES ON BACK PAGE

**THE BEAUTIFUL
FOSSIL FISH** from
central Queensland in
"natural brick." These fish
were rapidly buried with
the current bedding
showing sideways across
the fossil and the area has
been burned so the clay
rich shale has turned to
brick. We have several of these in our museum collection. Continue
to support the wonderful work the Lord has blessed us with as we
prep thousands of unique Fossils for our Museum Project.



JURASSIC ARK

Support Creation Research's
Outdoor Creation Museum
Gympie Australia, now online.



INTERACTIVE WITH
YOUR SMART
DEVICE TO TAKE
YOUR SELFIES



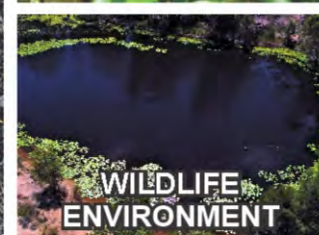
GREAT FOSSIL
DISPLAYS



GIANT MEGA-SHARK



FANTASTIC ORCHID
DISPLAYS



WILDLIFE
ENVIRONMENT



2 MESOSAURS
entwined in death



GENESIS GARDEN WALK
FROM ADAM TO AUSTRALIA



Get your picture with a MONSTER
GOD MADE. See how big they used to be!



STUDENT STUDY SITE



FOSSIL FLOOD
LOGJAM



SUPERVISED FIELD TRIPS

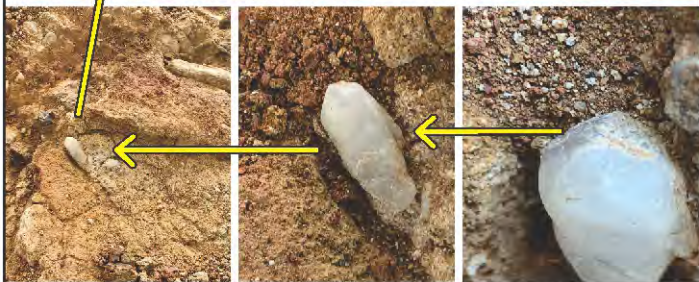


200m MURAL CREATION, THE FALL, THE FLOOD, BABEL TO AUSTRALIA

For bookings and more details www.creationresearch.net click **JURASSIC ARK**
or phone 07 32064467 or Daryl 0418 474 792 or email info@creationresearch.net



STUDENT VOLUNTEERS Luke and Kane (top left) have been a great help in learning to excavate but in finding some great stuff at Jurassic Ark, encouraged by our curator Daryl Brenton. Get in touch if you would like to join our volunteer team. Hope you spotted the strange 'out of place' Quartz Crystal found by John Mackay amongst our petrified wood specimens (middle left)? Note also some of the wood fossils seem to have very suggestive almost 'tool like' shapes (below). Phone Daryl on 0418 474 792.



HOT STUFF FIND In a recent excavation (right) John Mackay noticed some apparently woody material inside a new 'petrified log' he had found at Jurassic Ark. It looked very realistic so we decided to test it using our blue methane gas gun. The petrified wood burned with the characteristic yellow flame of wood, indicating both the presence of 'original wood', with the yellow flame caused by the presence of sodium in the wood. For those unfamiliar with this..wood ash is a key ingredient in old fashioned soap making. The ash dissolves in water to form Sodium Hydroxide which reacts with animal fat to make soap. All of which means this wood has a high probability of containing pine tree DNA preserved in the cells. Joseph (UK) will be analysing this as part of the PhD studies he's doing.

Pray the Lord will raise up many more young men and women to assist those of us who are living Fossils as we work on this exciting excavation. Don't miss our reports on www.creationresearch.net

AUSTRALIA Head Office: P.O. Box 260 Capalaba. Qld. 4157 Ph. (07) 3206 4467 or 0488 740 407 Email: info@creationresearch.net

www.creationresearch.net
QnA: askjohnmackay.com

CANADA 36 Parkside Drive Uxbridge ONT L9P-1K7 Ph: (905) 852 3470

NEW ZEALAND 3A The Circle, Manly Whangaparaoa 0930 Ph. 021 989 229

USA P.O. Box 281 Hartsville TN 37074 Ph. (931) 260 8671 or (931) 537 3180 USA www.creationresearchusa.org

UK PO Box 286 Oswestry SY10 1GD Ph: 0161 371 1877 or Joseph 07713 681 406