



Creation News

www.creationresearch.net

www.askjohnmackay.com

GOD'S CALLING IS WITHOUT REPENTANCE

Romans 11:29 above says it all! Our March Adelaide seminar came alive when a person I hadn't seen in some 40 years turned up with a challenging question 'Do you remember me?' What a joy when I did remember. His name was Harry Mitton and he shared: "I'm so glad you stayed faithful to the calling God gave you!"

Harry had played a big role in pointing myself and Ken Ham into full time ministry. We were attending the Warwick Easter convention having just started ministry on the important issue of the truth of Genesis. Both of us were becoming overloaded with work and requests, so I spoke to Harry after his missionary address at the convention and asked him – please pray the Lord Jesus will raise up someone to go full time into this ministry because the students of this country really need someone teaching them God's Word is true from the beginning. At that point Harry pointed a convicting finger at me and said 'Why not you?'

Harry has been ministering in South Australia and had come to our Saturday afternoon Creation Research conference in Adelaide. During August in South Australia I will be preaching in Harry's church - now that we've re-found each other and the joy of knowing the God who called us is faithful and His calling is irrevocable. I immediately got in touch with Ken Ham in the USA who has been equally thrilled to be reconnected with Harry.



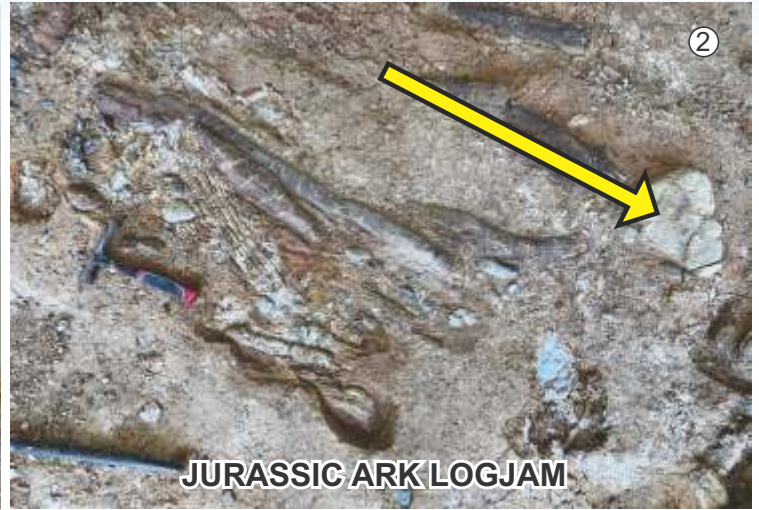
A MINI HURRICANE absolutely destroyed our shade tents at Jurassic Ark (1), but it pushed us to a decision to replace 'fragile tents' with metal buildings (2, 3) which would both protect our workers and the fossils from damage. The funds and materials were provided and shed number one went up! Thankyou Jesus. The white patches in the picture (4) are already excavated special fossils - so we have three more sheds to go and need your help in this.

Also just look at the results of John and helpers spending several days excavating fossils (5 below). Note also what a logjam it really is - spot the mishmash of logs (6). Note the rocks mixed with the logs as well as our cute 'two fingers' fossil find (7) - most probably a branch, but not fully excavated yet. Note the squashed logs (8) that also point towards flood deposition because the trees arrived fully saturated so they would squash without fracture (just as boat builders bend them). Note also – since trees float but rocks don't so both got there together. The trees, sediment and the rocks all travelled at the same time in monster flows that covered much of eastern Australia.



Noah's flood was not a time to be anywhere but on the ark.

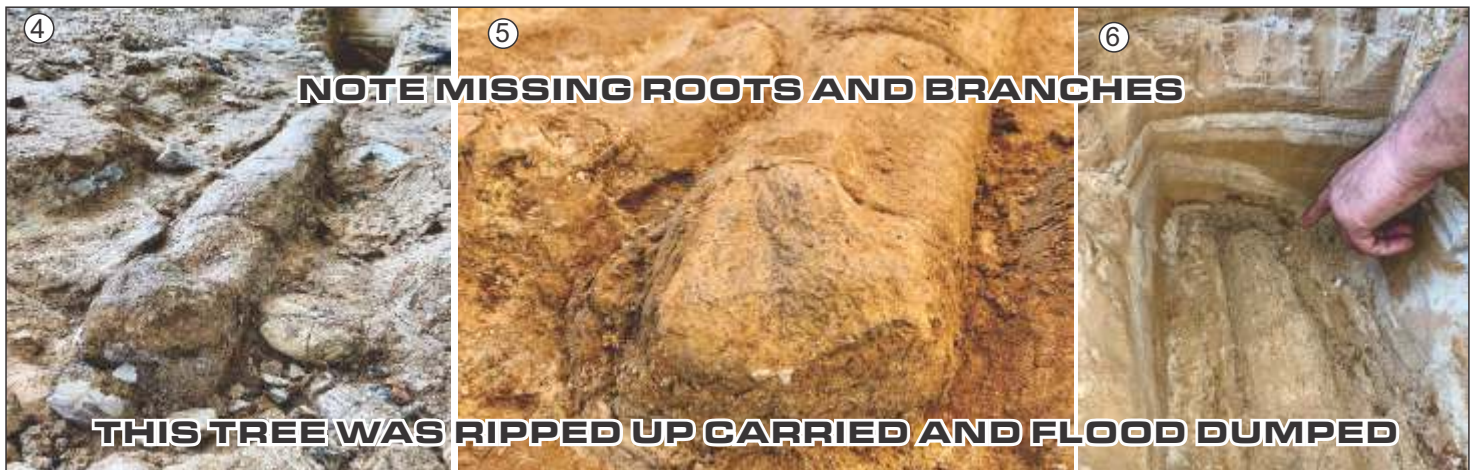
SITE COVER TWO GOING UP SOON. MATERIALS HAVE BEEN DONATED BUT YOUR HELP NEEDED WITH \$10K FOR BUILDER'S COSTS. WEB GIVE creationresearch.net click [DONATIONS](#) OR MAIL TO ADDRESSES ON BACK PAGE



Visiting central Queensland recently I came across a present day logjam (1). Flooding in the Burnett River had trapped trees against the bridge at Mingo. Note well that many of the shorter logs are arranged higgledy-piggledy, but the long logs show the direction of the water flow during the flood. The same pattern is seen in our Noah's fossil log jam at Jurassic Ark (2 above).

In addition many of the logs at JA which are buried horizontally have been squashed, but not fractured (3 above). All of which indicates they were soft and pliable at burial. Such a situation is only found when logs are waterlogged - the result of absorbing water after a significant amount of time in the water during a flood. Boat builders use the same 'waterlogged' technique to bend wooden planks to shape, just as the Vikings did. Despite the anti-creation and anti-flood basis of modern geology books, our carefully excavated site is a great way to show students they can recognise the evidence of catastrophic flooding. It's also a great opportunity to remind all ages that God sent the flood to judge sin and destroy all life that lived on the dry land and breathed fresh air - and the flooding evidence we have seen certainly would have done that. Note also the trees have been deposited with roots torn off and branches missing (4, 5 & 6 below).

Thank you for your generous support of this project to show the world that the rocks cry out the praises of God as both Creator and Judge. Also reminds people yet again that during the time of Noah's flood, the safest place to be was in the Ark, and the only safest place to be today is in Jesus' Ark.



UK HIPPO FOSSIL FIND BY JOE HUBBARD SLAMS CLIMATE CHANGE WARMERS as Joe excavated a small hippo-like mammal jaw (*Elomeryx porcinus*) (1) from the Isle of Wight (the Hamsted Beds). Joe reports: 'Buried in the same beds are hippos, crocodiles, turtles and lizards. None of which live in the UK today. The reason? It's too cold! So at some point in the UK's past it was warm enough to sustain tropical creatures, but now it's not. Even though we're currently warming up, it's still got a long way to go until it gets back to crocodile-temperatures! Earth's climate is cyclical for sure - just like God promised Noah it would be! See Genesis 8:22. The fossil will also make a wonderful display piece for our UK Museum's Project.

(2) Crinoids just look like plants, but more accurately they are upside down starfish like creatures attached to the floor of the ocean by a long stem with a hold-all at one end. Their arms wave around and collect particles of food so they really do look like a field of lilies. This perfectly preserved "mess" of sea lilies is definite evidence of rapid catastrophic flood type formation. Praise the Lord for so many examples of this that are being made available for our UK Museum project.



(3) WOW that's a huge TITE and it's now in our UK MUSEUM. It's origin was many many years ago in China and it is some 2m long. But then given the rate at which stalactites grow in the stalactite machine we invented, it doesn't represent millions of years and is scarcely even thousands of years old. But you're right - you haven't seen such a big stalactite in any museum. What a blessing for Creation Research.

(4) What's the kids favourite dinosaur after T-rex? The answer is usually Velociraptor out of the Jurassic Park movies. Two great models have just been given to our UK Museum. They are brightly and imaginatively coloured and Joseph loves them both. But next time you see a Velociraptor, either in the movies or museums, point out that Spielberg's big imagination turned a turkey sized fossil into a mega bite monster that kills everything. Why was Velociraptor was chosen? Simply because it's so easy for kids to say. Full credit to Spielberg for creative genius – but a real low grade for his accuracy.

DONATIONS - WEB GIVE PAYPAL or www.creationresearch.net OR MAIL TO ADDRESSES ON BACK PAGE.

TASSIE MUSEUM REPORT

Artistic Gains



MEET JÖRGAN - who just happened to turn up when the Tasmanian Discovery Center was at a critical junction. It wasn't open yet – and so the Tassie Team met for prayer and one of their prayers was very particular - they needed a signage artist, someone who creative and gifted. Shortly after Jorgan turned up and offered his services. The Lord did say whatever you ask for in my name that will I do that the Father may be glorified (John 14:13).



Now look at the mural above we have shipped to Tasmania by our Queensland artist STEVE CARDNO who has faithfully served in this ministry for many, many years.



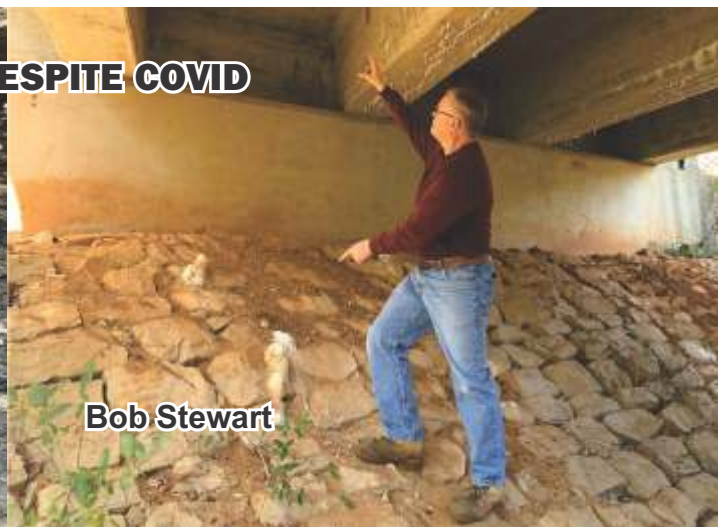
Such artwork is also a reminder that we humans can do paintings like this because we are made in the image of the Greatest Artist who is the Lord God and Creator of all.

**THE TASMANIAN CREATION MUSEUM IS GROWING
TIME FOR ALL TASWEGIANS TO GET ALONG AND SUPPORT IT.**

**Daniel, John & Nigel**

Three living fossils - young, old and middle aged - had a great March South Australian ministry from Kadina to Kangaroo Island over 10 days during a Covid gap.

The fossil evidence collected during their trip bears spectacular testimony to several things. One: fossils only form well if the creatures are very quickly buried. Two: the fossils are wonderful evidence that things do produce after their kind and evolution is a lie. Three: what a great opportunity to increase our fossil collection for our museums around the planet. Thanks for all your prayers and financial support which enable us to get to such places, as well as transport the fossils back to HQ in Queensland.

**Great Day Collecting****Daniel's Find****Whale bone fossil****Giant by comparison****Dr Glen Wilson****Bob Stewart****USA GAINS DESPITE COVID**

Jurassic Ark USA is one step closer as Dr Glen Wilson and wife Ruby have obtained land in Tennessee, not far north of Cookeville. The area is full of vertical polystrate fossil trees in coal seams. One coal seam has a shark fossil in it and our favourite seam in the area we have been excavating for years has Horseshoe Crabs and sea shells with abundant land plants - definitely a flood deposit. Pray for our geologist Bob Stewart right who has just finished a six week series for the River Church on Creator and creation.

COVID HAS SHUT DOWN FIELD TRIP'S AND MUCH OF OUR MINISTRY, BUT PRAISE THE LORD JESUS HE HAS GOT US THROUGH.

ONE FAMILY OF MAN

Red and Yellow, Black and White



CHRISTIANS RACING TO SELF DEFEAT Recently there have been efforts to solve racism with the claim there is only one race of man or we need to re- culture children's songs such as 'Jesus loves the little children' by changing 'Red and yellow, black and white', into a more 2020 racially acceptable 'Shades of black and shades of white, all are precious in his sight.'

Since a picture is worth a thousand words check the facts first before you cave in to US political pressure on the gospel. AND NOTE WELL: confusion is never solved by continuing it. Yes, the term race is used to refer to the human race, meaning the whole of humanity, but the same term is also historically and accurately used to refer to each separate colour or cultural group, and this double use confusion has been around since the term came into English from the French. This continuing confusion is commonly heard even in the speech of those who try to pretend they believe only in one race. If you want to eliminate the confusion, start using the Biblical term 'one kind' or 'one family of man', which does contain as many 'races' as there are distinguishable differences brought about by the scattering of people at Babel. Everyone of the separate human subgroups need the Saviour Jesus to solve the most serious common problem they have - sin, which makes race into racism.

So don't woke up - wake up to the devil's lies and spread the truth and the whole Truth. Christians must not be side tracked by the world's attempts to disenfranchise real history. The real world is one where you do need to sing Jesus does love the little children of the world, and they are 'red and yellow, black and white' and yes - all are very precious in His sight!



GREAT RACE PROGRAMS from Creation Research



AVAILABLE AS
STREAMING,
MP4s,
and DVDs.

STREAMING FREE ONLINE



One Blood with Many Races
with Joe, Diane and John

MP4s ONLY
\$12⁰⁰
Each Download

WEB ORDER: www.creationresearch.net click **SHOP**
PHONE: 07 3206 4447 or 0488 740 407
MAIL ORDER: PO Box 260 Capalaba Qld 4157
EMAIL: info@creationresearch.net

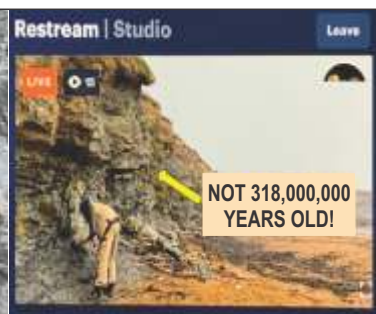
DVDs ONLY
\$20⁰⁰
Each Inc P & P

How the Lord Jesus has blessed our research in the UK this second Covid plagued year. We always make it a practice to begin our fieldwork with prayer, asking the Lord Jesus to open up the rocks to us that declare His praises. His answers to that prayer this year has certainly help make up for the lack of public ministry as Joseph found when he could use Creation Research Field Work as a "travel permit" to go film a newly found upright fossil tree. In excavating the site he was well rewarded with the finding of a new fossil thorn .

Anyone familiar with the Bible and accepting it as Gods revealed Word, knows there were no thorns until after ADAM sinned, so the fossil tree find in the Newcastle coal measures, normally held to be nearly 300,000,000 years of age, did not actually get buried until after man sinned. Keep praying for the Lord to bless the work of our hands to His Glory and the salvation of men and women, boys and girls.



New Fossil Thorn



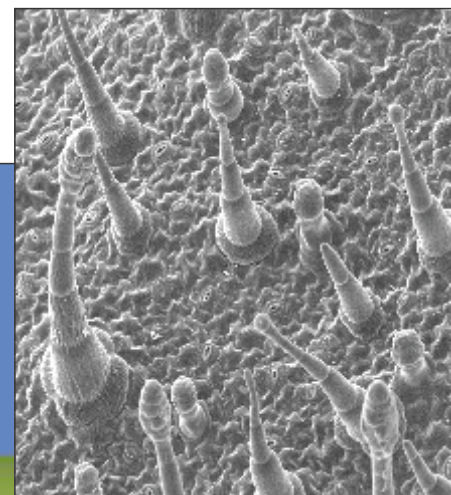
JOSEPH'S NEW ZOOM PROGRAMS. 'What's Up a Gum Tree?' was the question Diane Eager and Joseph discussed on our now weekly ZOOM Creation Conversations. Commonly called gum trees, the Eucalyptus family, along with other distinctive Australian plants, are often presented as evidence of how plants evolved to cope with Australia's harsh climate. However, they are actually good evidence for creation and Noah's Flood. Diane showed how Eucalyptus trees reproduce, illustrated with photos of their blossoms and seed pods, and reminded people we have only ever observed gum trees reproducing after their kind, just as Genesis says.



This was confirmed when "the oldest" fossil gum leaves, (flowers and seed pods) were found with exactly the same leaves, flowers and seed pods as those found still growing around Australia today. Diane's evidence was freshly picked 'up a gum tree' the day of the broadcast. When you discover the "oldest" Eucalyptus fossils were found in South America, and were once more widespread, but have survived only in Australia and a few nearby places, where there is less competition from other trees. Survival of the fittest is a real process, but it never produces evolution. The global loss of 'native' gum trees is a reminder the world has gone downhill, especially since the devastation of Noah's Flood. It's also great to be able to share them 'back' with other 'eucalyptus deprived' localities, where they used to grow.

CANADIAN INTERNET TV - DIANE EAGER on Did God Create Thorns?

In spite of this spikey topic Diane Eager had a good natured conversation with folk from the 3 channel teaching media (SFT) (*Standing for Truth*). Diane explained how thorns, spines and prickles formed after God cursed the ground and said it would yield "thorns and thistles". But God did not add anything to plants to make them spikey. It turns out to be a process of degeneration which results from the plant losing control. Thorns are formed when branches or leaf bases start to grow but stop prematurely. Spines form on leaves when the veins and soft tissue don't grow together properly, and prickles form as an overgrowth of surface layers. These are all downhill processes and are evidence the world has changed but it is not evolving. They also serve as a reminder that we are fallen people living in a fallen world and in need of a Saviour. What a blessing it is to know that Saviour has come, and what a blessing it is that, even with the Covid restrictions, we can still share this good news through Internet programmes.





In the beginning even the flies were made to be very good and we still see a trace of God's original good purpose for flies when we observe that they certainly behave as useful pollinators of some unique flowers. Enjoy some close ups of flies doing their bit on God's earth to make it a wonderful place, with the beautiful, unusual and little seen Bulbophyllum orchids of our Jurassic Ark collection (1, 2 above).

We now have two botanic Gardens at [Jurassic Ark](#). First is the one which follows the progression of history from Day Three of creation through Adam on Day Six, through sin and thorns and on to Australia. But we have been working on a newer and second botanic Gardens for High School and higher science students to learn their biology. It is our "After their Kind" gardens where you can see separate groups of plants such as the orchid kind, the tree fern kind and many others. It's specially important for learning how many variations there are within a kind, without the kind having ever evolved at all.



Our Bulbophyllums are being pollinated by flies (3) so note the 'caught' fly coming out of the orchid with the yellow pollen bags in the middle of its back (4). There isn't a single insect on the planet that can scratch the middle of its back, so any pollen stuck there is guaranteed safe postage to the next flower which, not surprisingly, is God designed to "receive male" delivery...pollen that is. Ogden Nash's famous poem about how God made the fly and then forgot to tell us why is funny but slightly inaccurate, since the Lord openly told us He made the flying creatures very good so that's what they did and still do. Sadly, now we live in a fallen world where flies have become better known for carrying germs from our inventions - such as sewers.

FOR PRAYER - more 'Botanic Gardens' means we need more water, so pray the Lord will provide us with abundant rain which has been very scarce this year west and north of Gympie.

VAN FOR JOSEPH - UK EXPECTED TO OPEN for ministry across the country during August or September, which means Joseph will need to replace the now failed ministry van. We have had 5 Thousand Pounds donated to date and need around 7 Thousand more. Donations are tax deductible in the UK.

URGENT RAIN NEED: A drought band still exists from north east of Jurassic Ark in Queensland to southwest of the sit, which also extends across a large area covering many of our farmer supporters. Please pray for God to bless greatly - at time of writing we have less than one week's water left. Despite 30mls (1 inch) recently we need around a metre (3 feet) of rain to start creeks flowing and fill the dam.

ROSE GARDEN COMING DOWNUNDER. This issue's article about green roses is about a plant that joins our current very few roses at Jurassic Ark. Coming up is a wonderful, beautiful, aromatic and spectacular rose flower garden ..yes along with their thorns part of explaining the real history of plants and the result of man exercising God given - dominion in breeding. Pray and donate as we expand our 'Separate Kind' gardens, particularly for upper high school students. Anyone wishing to donate particular types of roses (Disease-free please) contact Daryl phone 0418 474 792.

FOSSIL COVER SHEDS – New Design means we only need 4 sheds instead of 6 at Jurassic Ark – so pray Gympie Shire Council will approve the remaining 3 sheds. Site cover two going up soon. Materials have been donated, but your help needed with \$10k for builder's costs. We have proved there are thousands of fossil logs still underground on our site. We are proceeding with constructing protective sheds over the site and we need your help.

STORAGE CONTAINERS. As the amount of equipment being used at Jurassic Ark increases, we are in need of a large shipping container on site. Estimated cost \$3,000.

RESEARCH INTO COAL, OIL & GAS and fossil formation is proceeding like a house on fire as Covid shutdown gives us time to catch up on research. Our surprising results have been circulated to quite a few professors. Get behind these research efforts with prayer and support. More details on any of these at creationresearch.net, or contact John on info@creationresearch.net or Daryl at Jurassic-ark@creationresearch.net.

WEB GIVE creationresearch.net CLICK [DONATIONS](#) OR MAIL TO ADDRESSES BELOW

MEET SOME OF OUR GLOBAL TEAM - PRAY FOR THEM



John Mackay
Director of Creation Research



Anne Mackay
Head Office



Craig Hawkins
Tasmania



Dr Glen Wilson
TN USA



Joseph & Sarah Hubbard
- UK



Dr Nigel Currie
South Australia



Dr. Diane Eager
Canberra



Daryl Brenton
Curator Jurassic Ark



Sharon Sibthorpe
Head Office



Martin Legemaate
Ont. Canada



Joni Stewart
TN USA



Bob Stewart
TN USA

AUSTRALIA Head Office: P.O. Box 260 Capalaba. Qld. 4157 Ph. (07) 3206 4467 or 0488 740 407
Email: info@creationresearch.net

www.creationresearch.net
askjohnmackay.com

CANADA 36 Parkside Drive Uxbridge ONT L9P-1K7
Ph: (905) 852 3470

NEW ZEALAND 3A The Circle, Manly Whangaparaoa 0930 Ph. 021 989 229

USA P.O. Box 281 Hartsville TN 37074
Ph. (931) 260 8671 or (931) 537 3180
USA www.creationresearchusa.org

UK PO Box 286
Oswestry SY10 1GD
Ph: 0161 371 1877 or Joseph 07713 681 406



YOUR FINANCIAL SUPPORT OF OUR AUSSIE CREATION MUSEUM JURASSIC ARK IS GREATLY APPRECIATED.